

# COMMISSION AGENDA

Item No: 8B

Meeting: 6/18/2020

**DATE:** June 3, 2020

**TO:** Port Commission

**FROM:** Eric Johnson, Executive Director

Sponsor: Tong Zhu, Chief Commercial Officer & Chief Strategy Officer  
Project Manager: Scott Francis, Director of Real Estate

**SUBJECT:** Three-Year Lease with Concrete Technology Corporation  
1202 Port of Tacoma Rd., Tacoma, WA 98421

**A. ACTION REQUESTED – No action is requested at the First Reading. The following Action Request will be made at the July 16, 2020 meeting.**

Authorization for the Executive Director or his designee to enter into a three-year lease with Concrete Technology Corporation for the premises located at 1202 Port of Tacoma Rd., Tacoma, WA.

**B. BACKGROUND**

- Concrete Technology Corporation (Concrete Tech) was built by Thomas and Author Anderson in 1951, which was the first prestressing concrete girder factory in the country.
- Concrete Tech's facility is located at 1435 and 1414 Port of Tacoma Rd. which is adjacent to the Port's property at 1202 Port of Tacoma Rd.
- Concrete Tech needs additional yard space to store concrete girders.
- Because of the large size of the girders and high cost to move them, the Port's property at 1202 Port of Tacoma Rd. is the prime storage location.
- Concrete Tech has previously leased this location – the last lease term ended in 2016.
- This location is currently leased to Milestone Trailer Leasing, LLC. Concrete Tech has agreed to pay the required cost to relocating Milestone to a new location at 1721 Thorne Rd.

**C. PRIMARY LEASE TERMS**

- Lease Premises: Approximately 5.8 acres land.
- Use: Storage of concrete girders.
- Lease Commencement Date: Approximately August 1, 2020.
- Lease Term: Three (3) years with three mutually approved one-year extensions.
- Rent: \$34,800/mo. (\$417,600/yr.).
- Rent Escalation: Annual escalation based on CPI-U Seattle-Tacoma-Bellevue.
- Security Deposit: \$471,220 (one-year's rent + leasehold tax).
- Insurance Requirements:
  - \$2 Million general liability
  - \$1 Million auto liability
- All utilities are Lessee's responsibility.

- Lessor Maintenance/Repair Responsibility:
  - Primary electrical system
  - Fire hydrant inspections and maintenance
- Lessee Maintenance/Repair Responsibility:
  - Yard asphalt surface
  - Storm water system

#### **D. TIMEFRAME/PROJECT SCHEDULE**

1 <sup>st</sup> Reading of Lease	June 18, 2020
2 <sup>nd</sup> Reading of Lease	July 16, 2020
Lease Commencement	August 1, 2020
Lease Term	Three (3) years

#### **E. FINANCIAL SUMMARY**

Initial rent at \$34,800/mo. (\$417,600/yr.) This rent meets scheduled income for this property in the 2020 Budget.

#### **F. ECONOMIC INVESTMENT / JOB CREATION**

Concrete Tech currently employs about 210 local positions. This lease provides increased storage yard area to support increased workloads and additional projects. An additional 50 positions may be added in the next two years. The bridge girders produced at this location support many regional roadway projects that benefit the Port, Port tenants and the whole region.

#### **G. ENVIRONMENTAL IMPACTS / REVIEW**

No environmental impacts.

#### **H. NEXT STEPS**

- The Second Reading is currently scheduled for the July 16, 2020 Commission Meeting.
- Upon Commission approval the Lease is scheduled to start approximately August 1, 2020.

Item No.: 8B  
Date of Meeting: June 18, 2020

# First Reading: Concrete Technology Corporation Lease 1202 Port of Tacoma Rd.

Presenter:

Scott Francis  
Director, Real Estate  
Port of Tacoma



## Action Request



**No action is requested at the First Reading. The following Action Request will be made at the July 16, 2020.**

Authorization for the Executive Director or his designee to enter into a three-year lease with Concrete Technology Corporation for the premises located at 1202 Port of Tacoma Rd., Tacoma, WA.

# Concrete Technology Corporation Lease Location



3

# Concrete Technology Corporation Lease Premises



Yard = 5.84 Acres

## Background



- Concrete Technology Corporation (Concrete Tech) was built by Thomas and Author Anderson in 1951, which was the first prestressing concrete girder factory in the country.
- Concrete Tech's facility is located at 1435 and 1414 Port of Tacoma Rd. which is adjacent to the Port's property at 1202 Port of Tacoma Rd.
- Concrete Tech needs additional yard space to store concrete girders and other products.

## Background Continued



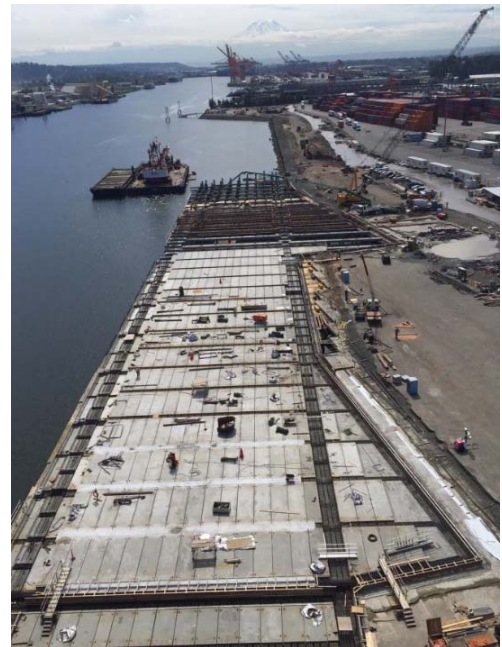
- Because of the large size of the girders and high cost to move them, the Port's property at 1202 Port of Tacoma Rd. is the prime storage location.
- Concrete Tech has previously leased this location – the last lease term ended in 2016.
- This location is currently leased to Milestone Trailer Leasing, LLC. Concrete Tech has agreed to pay the required costs to relocating Milestone to a new location at 1721 Thorne Rd.



## Concrete Tech Has A Long Term Relationship With The Port of Tacoma



### Pier 4 on Husky Terminal



## Concrete Technology Corporation Lease Terms



- Lease Premises: Approximately 5.8 acres land.
- Use: Storage of concrete girders.
- Lease Commencement Date: Approximately August 1, 2020.
- Lease Term: Three (3) years.
- Rent: \$34,800/mo. (\$417,600/yr.).
- Rent Escalation: Annual escalation based on CPI-U Seattle-Tacoma-Bellevue.
- Security Deposit: \$471,220 (one-year's rent + leasehold tax).

## Concrete Technology Corporation – Lease Terms Continued



- Insurance Requirements:
  - \$2 Million general liability
  - \$1 Million auto liability
- All utilities are Lessee's responsibility.
- Lessor Maintenance/Repair Responsibility:
  - Primary plumbing and electrical system
  - Fire hydrant inspections and maintenance
- Lessee Maintenance/Repair Responsibility:
  - Yard asphalt surface
  - Storm water system

## Concrete Technology Corporation Lease Benefits



- Concrete Tech currently employs about 210 local positions. This lease provides increased storage yards to support increased workloads and additional projects. An additional 50 positions may be added in the next two years.
- The bridge girders produced at this location support many regional roadway projects that benefit the Port, Port tenants and the whole region.
- This rent meets the scheduled income for this property in the 2020 Budget.

## Action Request



**No action is requested at the First Reading. The following Action Request will be made at the July 16, 2020 meeting.**

Authorization for the Executive Director or his designee to enter into a three-year lease with Concrete Technology Corporation for the premises located at 1202 Port of Tacoma Rd., Tacoma, WA.